

*Rely On*  
**RUUD**<sup>TM</sup>

**Air Conditioning**  
Model UARL- JEC

**Comfort Control<sup>2</sup> System<sup>TM</sup>**

*Life is fast...*



*... spend it  
doing the things  
you like to do.*

Your life stays in motion. Yet you stay in total control. Cool and calm at the center of any storm, completely at home in your environment.

You've made the right choices - and they're working for you. The world outside will keep spinning, but your world, you control.

You can rely on life to hand you something exciting and new every day. Rely on Ruud<sup>®</sup> Ultra Series<sup>TM</sup> to keep the comfort coming home.

**R-410A**

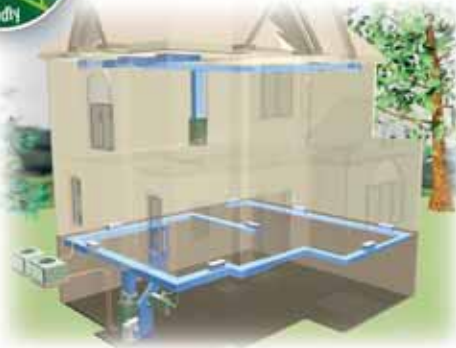


**ULTRA**  
Series  
**RUUD** **16 SEER**  
Two-Stage  
equipped with the  
**Comfort Control<sup>2</sup> System<sup>TM</sup>**



**RUUD**  
**ULTRA**  
 Series  
**16 SEER**  
 Two-Stage  
**R-410A**

equipped with the  
**Comfort Control<sup>2</sup>**  
**System™**



### Warranty Information

Ruud supports its equipment with strong warranties and reliable, professional service. That's why Ruud backs the *Ultra Series™* 16-SEER UARL-JEC Condensing Unit with a generous 10-year limited parts warranty. In addition, a 10-year conditional unit replacement warranty is provided (Registration Required). See the Ruud *Ultra Series™* Warranty Card for complete details.



### Protection You Can Count On

While your Ruud equipment is incredibly reliable and covered by an outstanding warranty, you can extend your warranty coverage with Protection Plus® extended service protection. Then you can relax and enjoy the comfort of your Ruud Condensing Unit – without worrying about the cost of parts or labor for unexpected repairs. Ask your contractor about the variety of Protection Plus plans now available. For more information, call 1-877-276-4294 or visit [www.protectionplusonline.com](http://www.protectionplusonline.com).



### KwikComfort® Financing

Ask your Ruud contractor about **KwikComfort® Financing**, the easy and convenient way to finance everything associated with your Ruud equipment – your original equipment, all subsequent service, Protection Plus® extended service protection, and even the comfort options you might choose to add later.



## Take a look inside...

Want to learn more about how your home's heating and cooling system operates? Take the interactive Ruud Virtual Home Comfort Tour online at [Ruud.com/VirtualTour](http://Ruud.com/VirtualTour).

### Features and Benefits: Comfort Control<sup>2</sup> System™



The *Comfort Control<sup>2</sup> System* provides:

- **On-Board Diagnostics** - The Ruud exclusive Dual 7-Segment LED Display on the control board quickly and accurately shows your contractor the source of system malfunctions. This feature aids the contractor in servicing or repairing your unit, saving you time and money.
- **Fault Recall** - Even if there is a power failure, this feature will retain the system's "operation history" and will display it on the control board for quick and easy viewing during service calls.
- **Active Protection** - This feature monitors your system to prevent the compressor from operating when potentially harmful conditions are detected.
- **Increased Reliability** - The thermostat communication capability can alert you to any necessary service requirements, giving you peace of mind that your home comfort is guaranteed.

### Heart & Scroll

The heart of your condensing unit is the compressor. That's why this Ruud unit features a Two-Stage Scroll® Compressor – widely recognized as the industry leader for performance and durability. Two-Stage compressor operation delivers the precise amount of coolness required, providing more even temperature and greater comfort throughout your home.

### Humidity Control

When matched with a Ruud furnace or air handler, the system adjusts airflow to help control humidity for unsurpassed comfort in the cooling mode.

### Durable Cabinet

Our galvanized steel cabinet, with louvered panels, protects your Ruud unit from the elements, helping reduce maintenance expense.

### Low Corrosion and Sound

A special base pan elevates the unit off the pad and away from corrosive condensation. More quiet performance and lower vibration levels are also a result.

### Fan-tastic

Our motor mount prevents damage to your fan motor — extending its service life and providing quiet operation and improved efficiency.



### Model UARL-JEC

- Two-Stage Models
- Features on-board system diagnostics
- Active compressor protection
- Up to 17.00 SEER/13.80 EER in certain matched systems
- Broad range of cooling capacities from 24,200 to 59,000 BTU/H
- A 10-Year limited Warranty on all parts, plus a 10-year conditional unit replacement warranty



"Proper sizing and installation of equipment is critical to achieve optimal performance. Split system air conditioners and heat pumps must be matched with appropriate coil components to meet ENERGY STAR criteria. Ask your Contractor for details or visit [www.energystar.gov](http://www.energystar.gov)."

**Ruud Heating, Cooling, & Water Heating**  
 P.O. Box 17010 • Fort Smith, AR 72917  
[www.Ruud.com](http://www.Ruud.com)

Ruud manufactures residential & commercial heating, cooling, & water heating products.

"In keeping with its policy of continuous progress & product improvement, Ruud reserves the right to make changes without notice."

Printed in the U.S.A. 11/09 DC Form No. M22-2038 Rev. 1